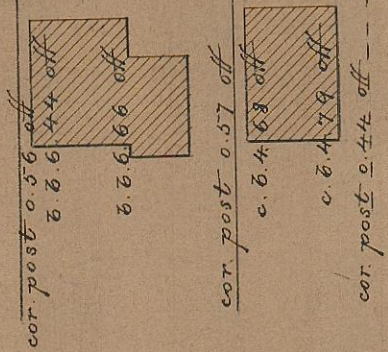


JENCKES ST.

ST.

50.15

67

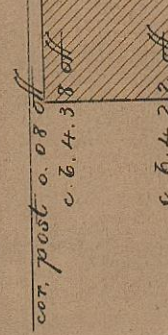


cor. post 0.57 off

c. b. 4.68 off

c. b. 4.78 off

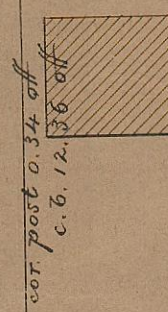
cor. post 0.44 off



cor. post 0.08 off

c. b. 4.38 off

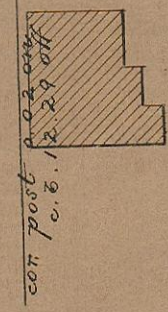
c. b. 4.22 off



cor. post 0.34 off

c. b. 12.36 off

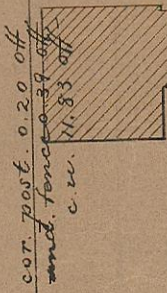
c. u. 11.94 off



cor. post 0.02 off

c. b. 12.24 off

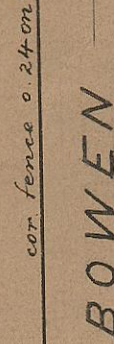
c. u. 11.83 off



cor. post 0.20 off

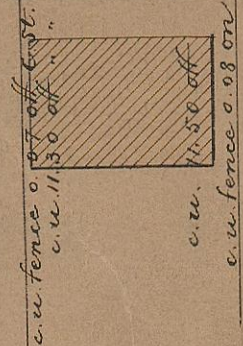
c. u. 11.83 off

c. u. 11.94 off



cor. fence 0.24 on C. St.

BOWEN ST.



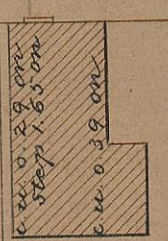
c. u. fence 0.17 off east

c. u. 11.30 off

c. u. 11.50 off

c. u. fence 0.08 on

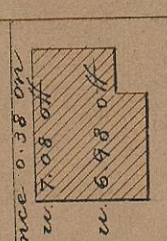
Scale 50 feet per inch.



c. u. 0.29 on

step 1.65 on

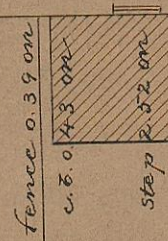
c. u. 0.39 on



c. u. fence 0.38 on

c. u. 7.08 off

c. u. 6.98 off



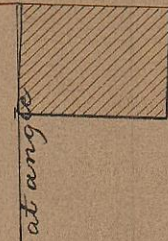
c. u. fence 0.39 on

c. b. 0.43 on

step 1.52 on

c. b. 0.27 off

cor. coping 0.14 on



c. b. at angle

95 / B36

OFFICE No 10261
 DRAWING 95
 SHEET B-3

F. B. B. VIII - 90-1.

PROVIDENCE, R. I.
 CITY ENGINEER'S OFFICE
 STREET LINE DEPT.

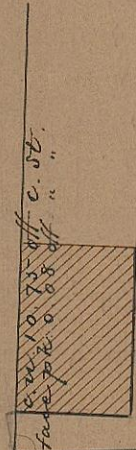
Oct. 7, 1889.

015535

50.15

CUSHING ST.

cor. wall at base 0.95 on Congdon St.



face pt. 0.04 on

cor. gran. post 0.47 on

cor. gran. post 0.44 on

cor. gran. post 0.27 on

step 1.46 on

step 1.62 on

cor. gran. post 0.41 on

cor. gran. post 0.80 on

step 1.82 on

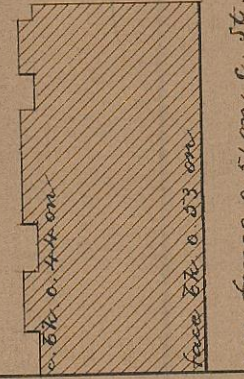
cor. wall 0.88 on C. St.

LLOYD ST.

cor. gran. post 0.38 on C. St.

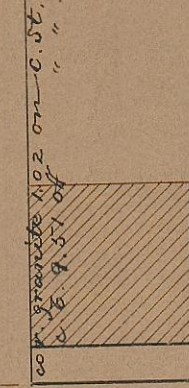
cor. gran. post 0.50 on

cor. post 0.55 on



c. u. fence 0.51 on C. St.

ST.



c. u. granite 1.02 on - C. St.

c. b. 9.57 off

cor. wall 0.40 on

step 1.55 on

cor. gran. post 0.37 on

cor. wall 0.29 on

step 1.41 on

cor. wall 0.54 on

face wall 0.04 on